

TROMBONE

BERLIOZ

Berlioz La Damnation

HUNGARIAN MARCH

2

Trombone I.

38 9 *f*

53 *ff* *p* *pp* 18

59 7 4 4 19 14 *p* 15 16 17 18

93 Viol. *mf cresc.* *ff* *ff* 20

99 *ff*

104

110 21

117 *p* *f* *f* 1 4

129 *p* 1 2

135 8 4 *p* 22

142

148 *p*

Eine Alpensinfonie.

Posaune I.

Richard Strauss, Op. 64.

Nacht.
Lento.

Fag. I.

1 *marcato*
pp *p* *dim.*

Allmählich ein wenig bewegter.

2 8 3 4 4 1 Pos. III. 2 5 6 Pos. III. IV. 6 2 Pos. III. *accelerando* *marcato*
f

7 Sonnenaufgang.
Festes Zeitmaß, mäßig langsam.

7 8 9 (getragen) 10 11 *accelerando*
ff *f* *mf* *f*

Der Anstieg.
Sehr lebhaft und energisch.

12 Pos. II. 13 5 14 6 15 3 16 2 17 10 18 Pos. III. IV. 19 3
f *ff* *dim. p*
poco rallent. *Tempo primo, sehr energisch.*

(Jagdhörner von Ferne.)

20 21 Pos. I. II. 19 3
f

Hörner in Es.

21 (weich) (sehr getragen) 22 Etwas Wieder dringend getragen. 23 6 24 11 25 1
ff *ff* *dim. f* *p* *csp. r.*

Alpensinfonie

Posaune I.

5

Sehr lebhaft.

Musical score for Horn I, measures 117-145. The score is written in G major and 2/4 time. It includes various dynamics, articulations, and performance instructions.

Measures 117-119: *ff*, *Fl.*

Measure 120: *ff*, (mit Dämpfer)

Measure 121: *ff*, (Dämpfer weg), *Tromp. I.*

Measure 122: *ff*, (weich)

Measure 123: *ff*, *Sehr schnell.*, *ritenando*

Measure 124: *ff*, *sfz*, *fff*

Measure 125: *fff*, *cresc.*, *ff*, *sfz*, *dim.*

Measure 126: *ff*, *dim.*, *p*

Measure 127: *ff*, *Hob.*, *poco calando*

Measure 128: *p*, *Etwas breiter.*, *maestoso*, *cresc.*

Measure 129: *f*, *Sonnenuntergang.*

Measure 130: *f*, *(Feierlich)*

Measure 131: *dim.*, *p*, *f*

Measure 132: *mf*

Measure 133: *mf*, *Rusklang.*, *Etwas breit und getragen.*

Measure 134: *mf*, *Fl.*

Measure 135: *mf*

Measure 136: *mf*

Measure 137: *mf*, *fp*

Measure 138: *pp*

Measure 139: *pp*, *Pos. II.*

Measure 140: *mf*

Measure 141: *mf*, *Etwas lebhafter.*, *Tpo primo.*

Measure 142: *mf*, *8*

Measure 143: *mf*, *Pos. III. IV.*

Measure 144: *mf*, *Nacht.*, *Baß-Clar.*

Measure 145: *pp*, *Breit.*, *Sehr langsam.*, *ppp*

Festive Overture
Trombone I

Shostakovich

7 Trone I
p

8 5
pp p

9
p

4 10 7
mf cresc.

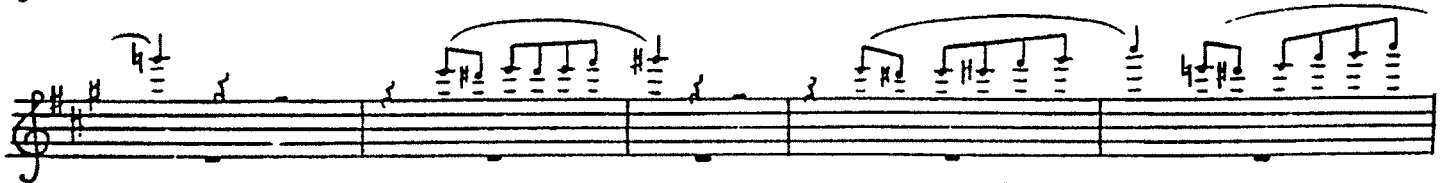
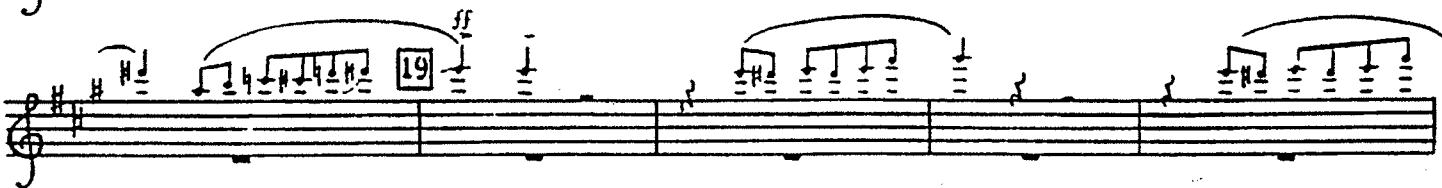
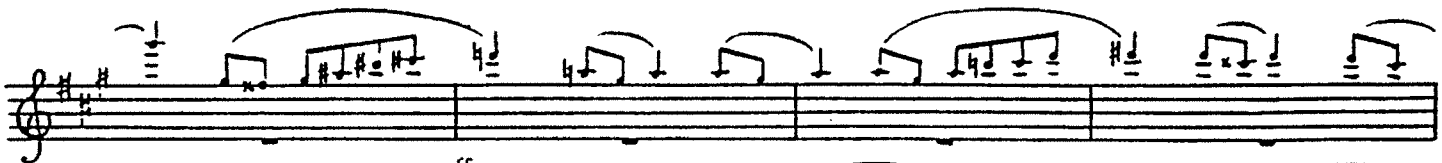
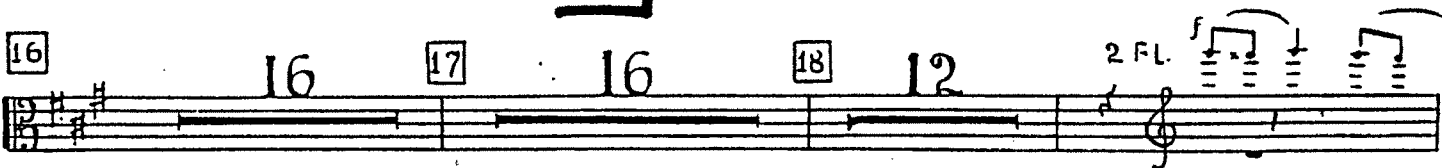
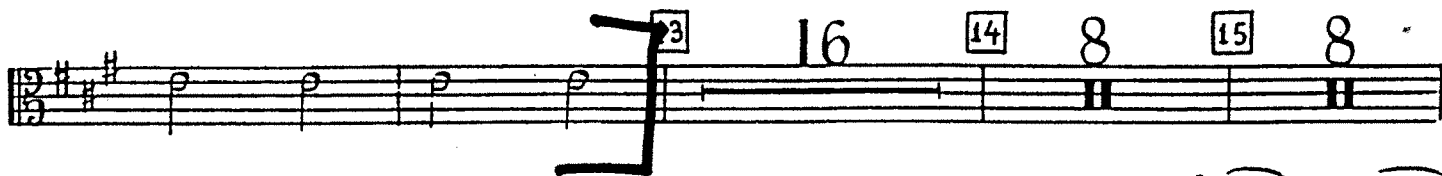
11
ff ff marcato

Schostakowitch

Festive Ov.

-3-
Trombone I

12



Schost.

Festive Orch.

- 4 -
Trombone I

Handwritten musical score for Trombone I, measures 20-23. The score is written on a single staff with a treble clef and a key signature of one sharp (F#). The time signature is 2/4. The music consists of a series of eighth and quarter notes, with some rests. Measure 20 starts with a dynamic marking of *mf*. Measure 21 has a dynamic marking of *f* and a *cresc.* marking. Measure 22 has a dynamic marking of *mf*. Measure 23 has a dynamic marking of *ff* and a *espress.* marking. The score is marked with measure numbers 20, 21, 22, and 23 in boxes. There are some handwritten annotations, including a large bracket under measure 23 and a squiggle above measure 21.

Schost.

Festive Ov.

- 5 -
Trombone I

Handwritten musical score for Trombone I, measures 15-28. The score is written on ten staves. The key signature is one sharp (F#) and the time signature is 2/4. The music features various dynamics including *sf*, *f*, and *ff*. Measure numbers 15, 24, 25, 26, 27, and 28 are marked in boxes. There are also handwritten annotations: a double arrow (\gg) under measure 17, a bracket with *sf* above measures 23-24, and a bracket with *f* below measures 23-24. The score concludes with a double bar line and repeat dots.

Phantastische Symphonie.

(In 5 Sätzen.)

Symphonie Fantastique.

(En 5 parties.)

Fantastic Symphony.

(In 5 movements.)

Trombone I.

I. II. e III. tacent.

IV.

Gang zum Hochgericht.

H. Berlioz, Op. 11.

Marche au Supplice.

The Procession to the Stake.

Allegretto non troppo. (♩ = 72)

Musical score for Trombone I, measures 14 to 59. The score is written in bass clef with a key signature of one flat (B-flat). It includes various dynamics such as *ff*, *f*, *p*, *pp*, *cresc.*, *dim.*, and *rall. poco*. There are also performance markings like *a tempo*. The score is divided into measures, with some measures grouped by brackets and labeled with circled numbers (50, 51, 52, 53, 54, 55, 56, 57, 58, 59). A large bracket labeled 'A' spans measures 56 through 59. The score is for Trombone I, and the instrument is indicated by 'Basso.' at the beginning of the first staff.

Symph. Fant.

Berlioz

2

Trombone I.

V.

Hexensabbath.

Songe d'une nuit du Sabbat. A witches' sabbath.

B

Larghetto. ($\text{♩} = 60$)

Allegro. ($\text{♩} = 112$)

Allegro assai. ($\text{♩} = 67$)

Allegro. ($\text{♩} = 104$)

Viol. (Violins)

Basso. (Bass)

Soli. (Solo)

Clar. (Clarinets)

Campano. (Glocken) (Bells)

Tuba. (Tuba)

ff (fortissimo), **f** (forte), **p** (piano), **pp** (pianissimo)

Measures 1, 2, 3, 4, 5, 6, 7, 8, 9, 10, 11, 12, 13, 14, 15, 16, 17, 18, 19, 20, 21, 22, 23, 24, 25, 26, 27, 28, 29, 30, 31, 32, 33, 34, 35, 36, 37, 38, 39, 40, 41, 42, 43, 44, 45, 46, 47, 48, 49, 50, 51, 52, 53, 54, 55, 56, 57, 58, 59, 60, 61, 62, 63, 64, 65, 66, 67, 68, 69, 70, 71, 72, 73, 74, 75, 76, 77, 78, 79, 80, 81, 82, 83, 84, 85, 86, 87, 88, 89, 90, 91, 92, 93, 94, 95, 96, 97, 98, 99, 100, 101, 102, 103, 104, 105, 106, 107, 108, 109, 110, 111, 112, 113, 114, 115, 116, 117, 118, 119, 120, 121, 122, 123, 124, 125, 126, 127, 128, 129, 130, 131, 132, 133, 134, 135, 136, 137, 138, 139, 140, 141, 142, 143, 144, 145, 146, 147, 148, 149, 150, 151, 152, 153, 154, 155, 156, 157, 158, 159, 160, 161, 162, 163, 164, 165, 166, 167, 168, 169, 170, 171, 172, 173, 174, 175, 176, 177, 178, 179, 180, 181, 182, 183, 184, 185, 186, 187, 188, 189, 190, 191, 192, 193, 194, 195, 196, 197, 198, 199, 200, 201, 202, 203, 204, 205, 206, 207, 208, 209, 210, 211, 212, 213, 214, 215, 216, 217, 218, 219, 220, 221, 222, 223, 224, 225, 226, 227, 228, 229, 230, 231, 232, 233, 234, 235, 236, 237, 238, 239, 240, 241, 242, 243, 244, 245, 246, 247, 248, 249, 250, 251, 252, 253, 254, 255, 256, 257, 258, 259, 260, 261, 262, 263, 264, 265, 266, 267, 268, 269, 270, 271, 272, 273, 274, 275, 276, 277, 278, 279, 280, 281, 282, 283, 284, 285, 286, 287, 288, 289, 290, 291, 292, 293, 294, 295, 296, 297, 298, 299, 300, 301, 302, 303, 304, 305, 306, 307, 308, 309, 310, 311, 312, 313, 314, 315, 316, 317, 318, 319, 320, 321, 322, 323, 324, 325, 326, 327, 328, 329, 330, 331, 332, 333, 334, 335, 336, 337, 338, 339, 340, 341, 342, 343, 344, 345, 346, 347, 348, 349, 350, 351, 352, 353, 354, 355, 356, 357, 358, 359, 360, 361, 362, 363, 364, 365, 366, 367, 368, 369, 370, 371, 372, 373, 374, 375, 376, 377, 378, 379, 380, 381, 382, 383, 384, 385, 386, 387, 388, 389, 390, 391, 392, 393, 394, 395, 396, 397, 398, 399, 400, 401, 402, 403, 404, 405, 406, 407, 408, 409, 410, 411, 412, 413, 414, 415, 416, 417, 418, 419, 420, 421, 422, 423, 424, 425, 426, 427, 428, 429, 430, 431, 432, 433, 434, 435, 436, 437, 438, 439, 440, 441, 442, 443, 444, 445, 446, 447, 448, 449, 450, 451, 452, 453, 454, 455, 456, 457, 458, 459, 460, 461, 462, 463, 464, 465, 466, 467, 468, 469, 470, 471, 472, 473, 474, 475, 476, 477, 478, 479, 480, 481, 482, 483, 484, 485, 486, 487, 488, 489, 490, 491, 492, 493, 494, 495, 496, 497, 498, 499, 500, 501, 502, 503, 504, 505, 506, 507, 508, 509, 510, 511, 512, 513, 514, 515, 516, 517, 518, 519, 520, 521, 522, 523, 524, 525, 526, 527, 528, 529, 530, 531, 532, 533, 534, 535, 536, 537, 538, 539, 540, 541, 542, 543, 544, 545, 546, 547, 548, 549, 550, 551, 552, 553, 554, 555, 556, 557, 558, 559, 560, 561, 562, 563, 564, 565, 566, 567, 568, 569, 570, 571, 572, 573, 574, 575, 576, 577, 578, 579, 580, 581, 582, 583, 584, 585, 586, 587, 588, 589, 590, 591, 592, 593, 594, 595, 596, 597, 598, 599, 600, 601, 602, 603, 604, 605, 606, 607, 608, 609, 610, 611, 612, 613, 614, 615, 616, 617, 618, 619, 620, 621, 622, 623, 624, 625, 626, 627, 628, 629, 630, 631, 632, 633, 634, 635, 636, 637, 638, 639, 640, 641, 642, 643, 644, 645, 646, 647, 648, 649, 650, 651, 652, 653, 654, 655, 656, 657, 658, 659, 660, 661, 662, 663, 664, 665, 666, 667, 668, 669, 670, 671, 672, 673, 674, 675, 676, 677, 678, 679, 680, 681, 682, 683, 684, 685, 686, 687, 688, 689, 690, 691, 692, 693, 694, 695, 696, 697, 698, 699, 700, 701, 702, 703, 704, 705, 706, 707, 708, 709, 710, 711, 712, 713, 714, 715, 716, 717, 718, 719, 720, 721, 722, 723, 724, 725, 726, 727, 728, 729, 730, 731, 732, 733, 734, 735, 736, 737, 738, 739, 740, 741, 742, 743, 744, 745, 746, 747, 748, 749, 750, 751, 752, 753, 754, 755, 756, 757, 758, 759, 760, 761, 762, 763, 764, 765, 766, 767, 768, 769, 770, 771, 772, 773, 774, 775, 776, 777, 778, 779, 780, 781, 782, 783, 784, 785, 786, 787, 788, 789, 790, 791, 792, 793, 794, 795, 796, 797, 798, 799, 800, 801, 802, 803, 804, 805, 806, 807, 808, 809, 810, 811, 812, 813, 814, 815, 816, 817, 818, 819, 820, 821, 822, 823, 824, 825, 826, 827, 828, 829, 830, 831, 832, 833, 834, 835, 836, 837, 838, 839, 840, 841, 842, 843, 844, 845, 846, 847, 848, 849, 850, 851, 852, 853, 854, 855, 856, 857, 858, 859, 860, 861, 862, 863, 864, 865, 866, 867, 868, 869, 870, 871, 872, 873, 874, 875, 876, 877, 878, 879, 880, 881, 882, 883, 884, 885, 886, 887, 888, 889, 890, 891, 892, 893, 894, 895, 896, 897, 898, 899, 900, 901, 902, 903, 904, 905, 906, 907, 908, 909, 910, 911, 912, 913, 914, 915, 916, 917, 918, 919, 920, 921, 922, 923, 924, 925, 926, 927, 928, 929, 930, 931, 932, 933, 934, 935, 936, 937, 938, 939, 940, 941, 942, 943, 944, 945, 946, 947, 948, 949, 950, 951, 952, 953, 954, 955, 956, 957, 958, 959, 960, 961, 962, 963, 964, 965, 966, 967, 968, 969, 970, 971, 972, 973, 974, 975, 976, 977, 978, 979, 980, 981, 982, 983, 984, 985, 986, 987, 988, 989, 990, 991, 992, 993, 994, 995, 996, 997, 998, 999, 1000

L'Enfant et les Sortilèges

TROMBONES I. II

3

29

SENZA SORD.

mf

30

1 1 4 1

gliss.

ff

31 32

8 5 p

33 Vibrer avec la coulisse SOLO

mf molto espressivo portando

34

3

3

pp

mf

TROMBONES I. II

35 *p* *mf* *pp* *mf* 6

ve Pos.

1 1 *p* *f* *gliss.*

37 44 Allegro 45

TACET jusqu'à Le Feu (solo) 13 (Bois) 4

46 *f* *Più vivo e accel.* Trp.

1 2 3 4 5

47 *mf* *mf* 2 *ff* 48 Moderato *tr* *Tacet jusqu'à 60*

Presto

60 Moderato 61 Rall. Più lento a Tempo Cl. basse *p*

(Cl. soli) 5 2 4 1 4