

Traits d'orchestre
Cahier n° 2

Alto

Wagner: *Tannhäuser*

Ravel: *Ma mère l'Oye*

Brahms: *Variations sur un thème de Haydn*

Orchestre de l'Université de Montréal

Wagner: Tannhäuser, Ouverture

De la m. 220 jusqu'à la m. 309

220 **H**
p molto espressivo *p*

225 *un poco accel.*
p *sempre cresc. -*

230

235 *fp più f*

242 **I Tempo I**
ff

246

250 *ff*

254 *ff* 3 3 3 3

258

261

264

267



270



K Molto vivace

273



278



283



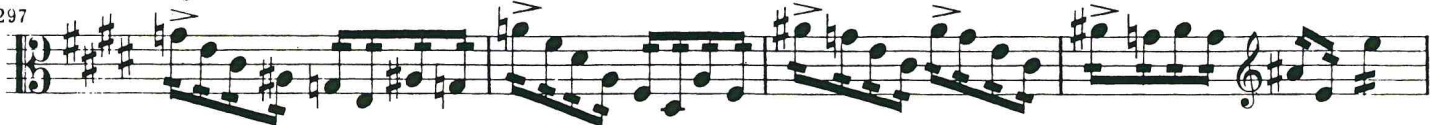
290



293



297



301



308



Ravel: Ma mère l'Oye, V. Le jardin féérique

De la 6^e m. avant le chiffre 3 jusqu'à la 3^e m. après le chiffre 3

Alto solo

1 ALTO
SOLO



mf *expressif*



SOLO



TOUS pizz.
p

Brahms: Variations sur un thème de Haydn, variations V, VII et VIII

Au complet sans reprise

Var. V

Vivace

206 *fp legg.* *sf p* *sf p* *f*

212 *pp legg.* *pp legg.* *G* Hr. I *sfp legg.* *sfp legg.*

218 *sf* *sf* *f* *pp legg.* *pp legg.*

224 *H* *f* *f* *p*

230 *p* *pp sempre*

237 *pp*

244 *I* *f* *f* *p* *p*

251 *pp legg.* *pp legg.*

257 *pp* *pizz.*

Detailed description: This is a page of a musical score for Variation V of Brahms' Variations on a Theme by Haydn. The tempo is marked 'Vivace'. The score is written for piano and includes measures 206 through 257. It features various dynamic markings such as *fp legg.*, *sf p*, *f*, *pp legg.*, *sfp legg.*, *pp sempre*, and *pizz.*. There are also performance instructions like 'Hr. I' and section markers 'G' and 'H'. The notation includes treble and bass staves with complex rhythmic patterns and articulation marks.

Var. VII
Grazioso

293 *p espress.*

298 *p dolce* *p* Viol.

305

311 *p espress.* *div.* *cresc.*

316 *p dim.* *pp*

Var. VIII
Presto non troppo
con sord.

322 *pp sempre*

328 *pp* **K** *tr*

336 *pizz.* *arco* *p*

349 *pp*

355 *pp* *pizz.*